



## Dynatone Digital Piano

It's all about the music



Dynatone Corp. #1701, Daerung Post Tower 1, 288 Digital-ro, Guro-gu, Seoul, Korea  
Tel : +82 2 890 6032 Fax : + 82 2 2082 2710  
[www.dynatone.biz](http://www.dynatone.biz)

# Dynatone, it's all about the music.

Dynatone Corporation was first established in 1987, and has grown to become a leading manufacturer of electronic musical instruments. The corporation first began as the Electronic Musical Instruments Division of Korea Electronics Co., LTD (KEC). After Dynatone Corporation took over LG's digital piano operations in 1996, the company focused on expanding its capacity to become an independent establishment. In 2000, the company was separated from KEC to become an industry specialist, and adopted the name Dynatone, the brand of KEC's flagship products.

Since the beginning, Dynatone Corporation has produced and has sold worldwide, electronic keyboards, electronic organs and digital pianos under the flagship brand as well as an original equipment manufacturer (OEM). The corporation produced the first electronic keyboard instrument in South Korea.

In 1988, only eleven months after the first electronic keyboard was produced, and shortly after the first shipment to the United States, Dynatone Corporation exported 500,000 electronic keyboards. By 1989, the corporation had exported over 2 million instruments, and has continued to record a steady growth in overseas sales. Currently, Dynatone Corporation exports digital pianos to 30 countries worldwide.

## History

- 2016** Attended major music fairs:  
Namm show in Anaheim, USA (5 consecutive years)  
Musik messe in Frankfurt, Germany (16 consecutive years)
- 2015** Developed the 4th generation of Dynatone's hammer action keyboard ARHA-3I (Advanced Real Hammer Action with 3contacts & Ivory top)  
Developed the First Domestic Digital Piano with 256 POLY 'ROS V5 & V5 Plus SOUND' System
- 2014** Attended three major music fairs:  
Namm show (Anaheim, USA), Musikmesse (Frankfurt, Germany), Music China (Shanghai, China)
- 2013** Established Dynatone America Corp.
- 2012** Released the high-Polished digital piano SGP-500, SDP-500
- 2011** Released the model DPR-2200H with Dynatone's 3rd generation keyboard ARHA
- 2010** Released the slim and compact SLP series  
Developed the 3rd generation of Dynatone's hammer action keyboard ARHA (Advanced Real Hammer Action)
- 2009** Released the high-end digital piano DPR-2200
- 2007** Acquired 2 patents initially in Korea, for the player piano
- 2006** Released the first player piano, DP-100, in Korea
- 2003** Established Dynatone's authorized R&D center  
Exported digital pianos to UK, Turkey with Dynatone brand
- 2002** Developed the First Domestic Digital Piano with 124 POLY 'RPS V3 SOUND' System  
Introduced 'NEW-HWS Key Installed Digital Piano (2nd Generation)
- 2000** Established Dynatone Corp.  
(Becoming independent company separated from the Electric Instruments Division of KEC)  
Acquired the QS 9000 Certification, a prominent international quality assurance system
- 1999** Manufactured over 7 million Electrical Instruments
- 1998** Initiated exporting digital pianos to Europe  
Received ISO 14001 (Environmental Management Standard) Certification Award  
Initiated exporting digital pianos to USA
- 1996** Introduced 'HWS Key Installed Digital Piano (1st Generation)  
Acquired the digital piano business from LG Electronics  
Received ISO 9001 Certification
- 1995** Created Sound Source IC Development for the Digital Piano
- 1987** Initiated Manufacturing of Electrical Instrument 'DYNATONE'

## Factory

Dynatone Corporation manufactures the premium digital pianos in the main production facility in South Korea and the High Polish Digital Pianos as well as the affordable digital pianos in China but in the different factory. Our main production facility is located in the prominent Gumi National Industrial Complex, a site frequently referred to as the mecca of South Korea's high tech industry.

Adjacent to Dynatone's main factory, in the Gumi National Industrial Complex, not only can one find large production facilities of major electronic industry giants such as Samsung and LG Display, but also other production facilities known for producing parts of exceptional quality. These other production facilities supply parts to the above mentioned tech companies.

In order to ensure that our digital pianos are superior to our competitor's, we refuse to compromise on the quality of the parts used to make our digital pianos. Each component is made by trusted manufacturers based in the Gumi National Industrial Complex. It is because of our demanding standards, our digital pianos possess the highest possible level of musical expression.

Dynatone's state-of-the-art production facility contains automated processes and equipment, allowing for quality inspections for each and every product. In particular, Dynatone has a separate production line for digital piano keyboards, where the major digital piano components are manufactured. Every component needed for the digital pianos undergo an automated testing process, and only those that pass inspection will be carefully selected to be used in our digital pianos. Likewise, all of Dynatone products go through extensive quality control processes to ascertain that they are of the utmost quality, and thus have garnered critical acclaim from people around the world. Our factory is in compliance with International standard code ISO9000 and national safety standards, UL, CSA, CE and FCC. Dynatone is committed to being a leader in corporate responsibility. We have taken special care to ensure that any hazardous or self-containable materials are well below the limits set by the European Union (EU) Restriction of Hazardous Substances in Electrical and Electronic Equipment (RoHS). With our state-of-the-art facility and first-rate components, Dynatone continuously strives to craft masterful digital pianos.



## R&D

Dynatone's state-of-the-art Research and Development facility is the cornerstone of innovation and where the technical aspects of our instruments are developed. Inside this facility are divisions for digital hardware design, sound sampling & generation, amplifier design and digital piano keyboards.

Actively pursuing collaborations, the Joint Academic-Industrial Collaborative Development Project and partnerships with other IT companies provide Dynatone with an edge to lead the industry with the most innovative products of unsurpassed quality. In 1995, our R&D facility successfully developed the first generation Sound Generator IC. Soon after, in 1998, our first generation HWS(Hammer Weight Soft Action) Digital Piano Keyboard was developed and was successfully launched. Currently, our fourth generation ARHA-3I (Advanced Real Hammer Action with 3contacts & Ivory top) Digital keyboard and Sound Bank have been developed and have gone into production.

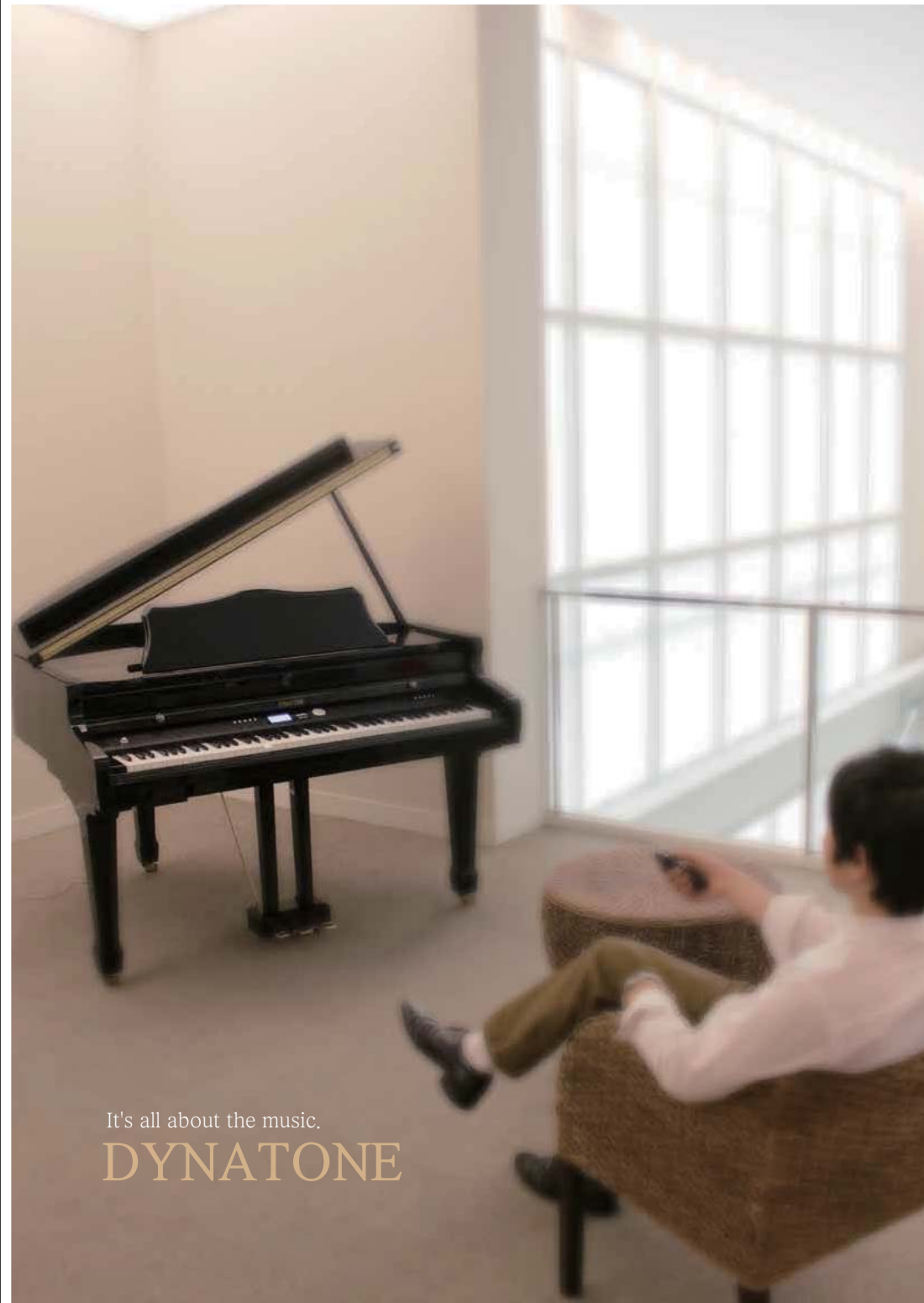
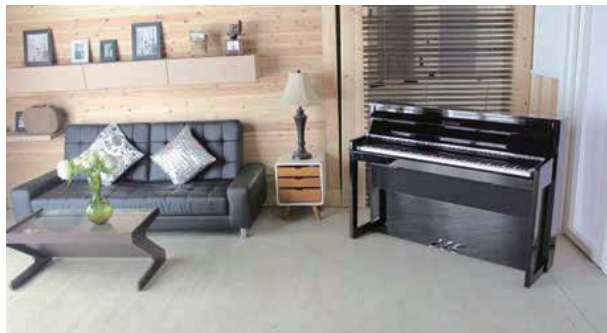
In 2007, our facility developed a Player Digital Piano. At that time, there were only two player piano manufacturers in the world. Now, our second generation Player Digital Piano, the VGP-4000Q, will be in a mass production from the early of 2016.

For 2016, Dynatone launches high-performing digital pianos featuring a three-sensor keyboard and 256-note polyphony. This digital piano possesses remarkable expression and can answer to the highest musical demands. Our company has made it a priority to use our core competence as the basis on which to develop and to introduce high performance products to all over the markets.



## Global Sales





It's all about the music.  
**DYNATONE**



# The Sound

## The Abundant Sound of the ROS V.5 Plus (Real Orchestra Sound Version 5+)



The ROS V.5 Plus sound source combines Dynatone's innovative and unique sampling technology with the sound of finest European grand pianos to produce its refreshingly new sound.

With Dynatone's innovative and unique sampling technology in one pocket, and the sound of finest European grand pianos in the other, the ROS V.5 Plus sound source now enjoys a new birth in its refreshingly new sounds.

Due to the sampling technology Dynatone is able to offer a uniquely expressive tone color, its sound deeply resonating with its player providing the most satisfactory playing experience.

Equipped with the sounds of top tier European grand pianos, the ROS V.5 Plus employs the large-capacity MLFSS(Multi Layered Full Scale Sound) to offer its two distinguished grand piano voices. One button click is all that takes to pick your choice that suits your music.

These quality grand piano voices could serve many kinds of musical interests.

## Supporting high-capacity memory and diverse expression

The abundant sound of a digital piano requires a memory space that is large enough to contain the high-resolution samples.

Dynatone's ROS V5 Plus supports a total of 8Gb of memory in order to store all its large-sized MLFSS (Multi Layered Full Scale Sound) and MLS (Multi Layered Sound) sources.

The MLFSS (Multi Layered Full Scale Sound), with its extremely large data size, assigns separate sample data to each portion of dynamic range which is divided into many levels, allowing natural expression of forte and piano. To play it is like to have many different types of high-end grand pianos in one hand, due to its inclusion of diverse grand piano sounds with differing characters.

With this wide selection of grand piano voices, all genres and styles ranging from 18th century Baroque to contemporary music are fully covered, its expression more accurately in the character of the style.

## The deeply resounding resonance of the grand piano

When a grand piano is played it produces a variety of different sounds that are not directly resulting from the keystroke - the product of various resonance phenomenon. Dynatone captures each of them into its digital pianos in order to provide more authentic piano-playing experience.

This feature, called the Acoustic Simulator, allows to closely emulate the characteristics of acoustic piano sounds. String resonance, damper resonance, damper samples and key-off sounds are all included in the samples as to bring the sensational experience of hearing the sound of a concert grand in a resonance-optimized concert hall.



The string resonance emulates the vibrations of sympathetic strings that occur when playing a grand piano. While a note is being held down, playing an additional note whose frequency is a multiple of the first one causes all strings sympathetic with that overtone series to vibrate. This resonance effect is applied to the sounds so that the authentic grand piano sound is replicated allowing for fully resonant harmony.

The damper resonance refers to the particular resonance effect that takes place when using the damper pedal. When the pedal is pressed all dampers inside the piano are lifted



from the strings, and it is the sound resulting from the interaction between notes and dampers that is sampled. Differing effects are provided depending on the depth the pedal is pressed.

Also, the damper samples capture the natural vibrations of all free strings except the ones played, with the dampers raised above the strings.

The Key-off sound emulates the subtle sound that occurs as a key is released. It recreates the sound of dampers falling back onto their respective strings as the pianist releases his or her hand off the keys, allowing for more realistic playing.



These in-depth resonance and other subtle components of piano sound, along with the brand new enhanced keyboards of Dynatone, are designed to provide natural playing experience, embellished with all-natural touch, response and sound.

## 256 Maximum Polyphony

Larger number of maximum polyphony allows a digital piano to play more notes simultaneously without running out of handling capacity which causes loss of earlier notes.

Dynatone supports maximum 256 notes of polyphony, which is enough to fully support the performance by professional pianists.

## Equalizer System for Customizing

Dynatone's equalizer system divides the full frequency range of piano sounds into four levels consisting of high (~2.6KHz), middle-high (~1KHz), middle-low (~300Hz) and low (~115Hz), and allows to adjust the volume of each frequency range independently.

8 types of preset EQ is included, as well as the option to fully customize your own frequency-volume settings, and you are free to perform with the sound of your choice.



# Keyboard

## ARHA-3I



The culmination of Dynatone's technology and extensive experience in piano key development stemming from its R&D team, the ARHA-3I keyboard was designed with pianists of all skill levels in mind. With the ARHA-3I keyboard that simulates the touch of grand piano keys, one is set to let oneself lose in the pleasure of playing - without realizing that it's a digital piano keyboard.

## Ivory-Topped Keys (Artificial Ivory Touch)

Decades ago, ivory keys, with its elegant feeling and soft touch, used to be on top-tier digital pianos, and was the preferred choice of keyboard by many pianists. Though the usage of real ivory is strictly banned now, Dynatone's ARHA-3I brings the feeling of ivory keys back to life with its artificial ivory topped keys, which have softer surfaces and whose high absorption prevents fingers from sliding even when playing for extended periods.



## Graded Key Hammer Action

The hammer action system of ARHA-3I are based on the weights of hammers in real grand pianos, which allows more delicate control of the keys. Also, the action is 'graded', meaning that the lower keys are weighed heavier than the higher keys which is how actual piano keys are made.

## Triple Sensor System

Invented based from Dynatone's core technology, the triple sensor system is very elaborate by design. Each key has three sensors beneath it to detect its movement in minute resolution so that the pianist may exercise delicate controls over the keys without losing out quickly repeated notes.



## New RHA-3W

Conveys the feeling of real keys that every pianist desires.

New RHA-3W was born with the sole objective of creating a keyboard as close as possible to acoustic piano keys, and presents the best qualities of acoustic key touch on a digital piano. Enjoy the sensation, with the new generation of Dynatone digital pianos.

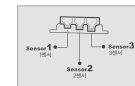


## Wooden key

Before making it to the keys, the wood used for New RHA-3W goes through processes identical with those that are used to create acoustic piano keys, then is subjected to careful inspection. This detailed process ensures that the keys would be of fine quality and close to the feel, weight and touch of acoustic piano keys.

## Graded Key Hammer Action

In order to better represent the touch response of acoustic piano keys, the keys of New RHA-3W grows in weight as it moves towards the bass and vice versa, allowing the pianist more natural control over the keys.



## Triple Sensor System

The triple sensor system of New RHA-3W, a creation of Dynatone's technical expertise, allows extremely fine key movements to speak out. Equipped with three sensors that keep track of the subtlest movements of the keys, New RHA-3W reacts more sensitively to the movement of its keys and translates that motion into a realistic and breathing piano performance.

# Utilities

## Virtual Pianist System

The Virtual Pianist is a VGP-4000Q feature that 'performs' its keyboard automatically in accordance with a demo piece that is being played. This used to be something that was only possible by adding on an expensive device to an already expensive acoustic piano, but Dynatone's technology came up with a self-playing system independently, requiring no additional devices and easily accessed via simple controls. Dynatone provides a free music library consisting of about 1,300 pieces coming from different genres to be played through the player system for enjoyment, without needing an accomplished pianist.

## USB TO HOST & DEVICE

### 1. Convenient MIDI Access



Connect to a computer or an external MIDI device via USB MIDI using the USB TO HOST terminal to gain access to all MIDI related projects and performances.

### 2. Recording and Playing

Recording is easily accessible by connecting to external devices (computers, tablets or smartphones) via USB audio, and playing recorded material is just as simple. The piano is also capable of playing music files stored in an MP3 player.

\*The USB features support Windows/Mac/iOS/Android systems. Actual compatibility may vary depending on the specific version and the types of the app.

## Half-Pedal

Pianists control the amount of sustain they get when using the damper pedal by adjusting how deep they press it. In order to further enhance playing experience, Dynatone incorporates the half pedal feature which is designed to respond to the depth of the pedal to provide the players with the ability to perform the delicate control that they exercise on acoustic pianos.



## Volume Control of Resonance Effects

The acoustic grand is a source of many different resonance phenomenon. Having captured these subtle elements of piano sound into its digital lineups, Dynatone also offers the option to control the strength of these various resonance effects so that anyone would be able to set up the configuration that suits oneself.

- Damper Resonance Volume Control
- String Resonance Volume Control
- Damper Resonance Sound Volume Control
- Key-off Sound Volume Control
- Mechanical Noise Sound Volume Control

## Stretched Tuning

Acoustic grand pianos have some variations in the frequencies of overtones depending on the tension and stiffness of the strings, and a unique tuning method called stretched tuning is employed to compensate for it. This method tunes the low notes lower than their actual pitches and the high notes higher, addressing the balance between the overtones of notes and therefore reducing the dissonance that occurs as multiple notes are played simultaneously.

## Registration Memory

Once fully set, the full configuration (voices, parameters etc.) of the piano may be stored to one of the registration memory slots to be recalled later for future access. A performer may recall his/her favorite configuration with surprising convenience.

## Auto Power Off

In order to conserve energy and reduce power consumption, Dynatone pianos are equipped with auto power management system that turns the power off following 30 minutes of inactivity.

## Smart Bay



The smart box is located on the top of the panel for ergonomic concerns, facilitating convenient connections with external devices and easier access to smart features.

## Fully Dimensional Sound System

Equipped with high-end spec woofer and twitter speakers, Dynatone produce more realistic sound than ever before. Its 2-way, 6 speaker composition offers abundant and powerful sound.



## LCD Display / Data Wheel



The LCD is easy to read, and even easier to control with the data wheel, providing an altogether intuitive interface for the users.

## Other features

- Many performing utilities including Layer, Split, Twin Piano
- Playback of Beyer, Czerny and Burgmüller etudes for enhanced piano learning experience
- High quality reverb simulator to create the atmosphere of fine concert halls

# Refined Designs

## Cabinet & Soft-closing system of VGP-4000Q



The compact, modern design and nickel plating of SGP-600



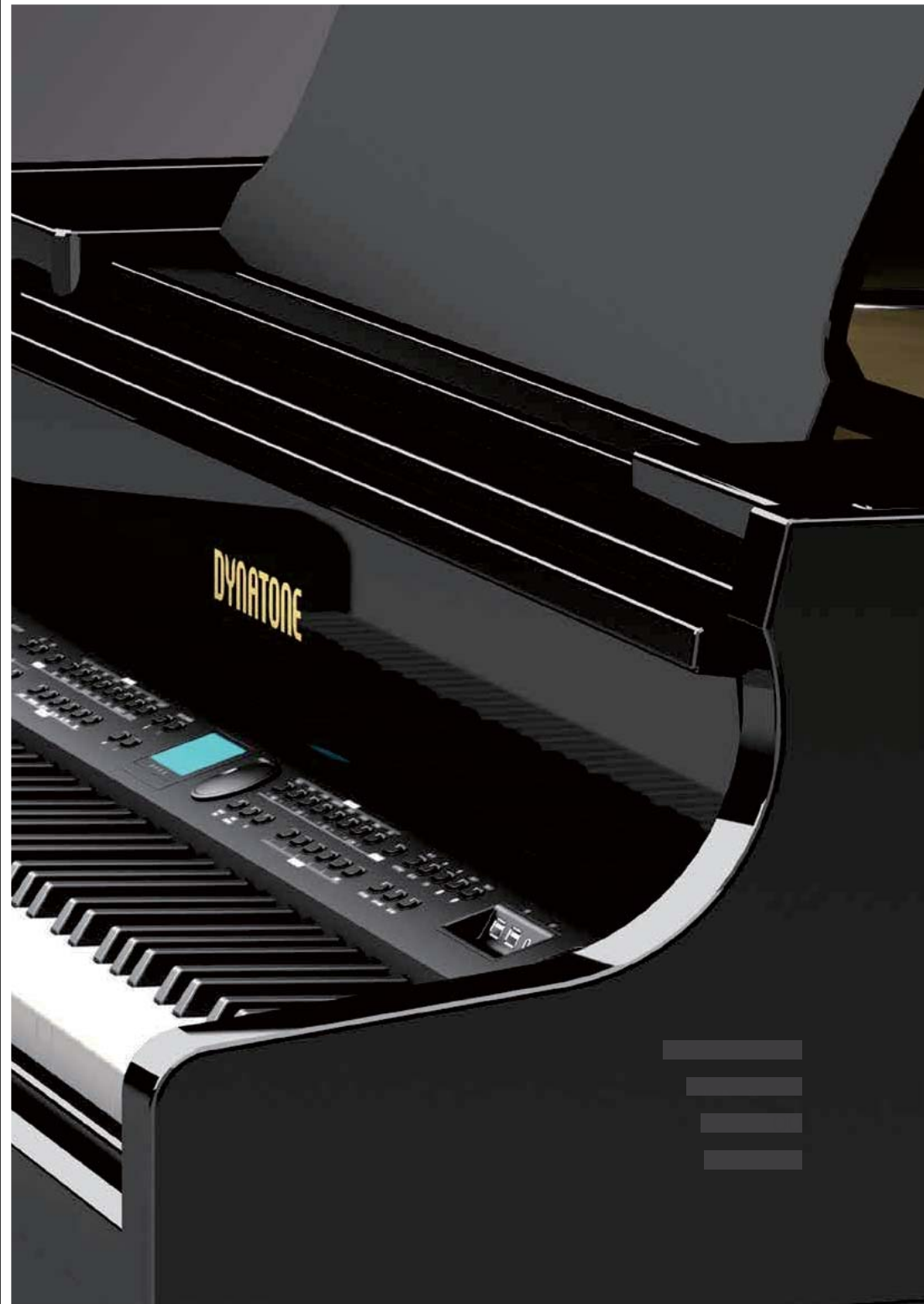
## Soundboard of SDP-600 and its nickel plating / Mahogany accent



# Polished piano

Dynatone's polished piano series imbued with the beauty and classy look of finely crafted cabinet.

The natural wooden keyboard(New RHA-3W) with authentic piano key response and the refined voice thrived from European quality pianos boast more than their fine craftsmanship itself and are the result of endless determination to satisfy users.





## VGP-4000Q

The virtual piano VGP-4000Q is equipped with the ROS V.5 Plus system which contains samples of finest European grand pianos. The ROS V.5 Plus sound source, created using the multi-layer sampling technology of Dynatone, is characterized by its deeply resonating piano sounds.

An enhanced sound system consisting of 2 channel and 6 speakers is integrated within its 4'8" cabinet which is also the size of acoustic grands to deliver finest quality sound that is powerful enough to be heard in larger spaces such as restaurants or hotel lobbies.

The wooden New RHA-3W keyboard is equipped to make it not only look, but also respond like a grand.



### Virtual Pianist

Polished Ebony Finish

   New RHA-3W  
ROS V.5 Plus  Player System

- 88 Real Hammer Action wooden keyboards with 3 sensors (New RHA-3W)
- 256 Polyphony Notes
- ROS V.5 Plus
- EXV 10 + GM128 Voices
- 80 Auto-Accompaniment Rhythm Styles
- 128 X 64 LCD Display
- Player Piano System : AMD, SMF File Format Compatible
- Record : 2 Track 3 Song • 16 Registrations (4 bank x 4)
- HD Reverb, HD Effect • Layer • Split • Twin Piano
- 4-Band Graphic Equalizer • Master Tune • Key Transpose
- 3 Pedals (Soft/ Sostenuto/ Damper) with half-damper
- Power Output : 50W+50W (2-Way 6 Speakers)
- MP3 Music Player • Smart Bay

## GPR-3500

The GPR-3500 features everything that the luxurious VGP-4000Q offers except for the virtual piano system in a more reasonable price. Since its cabinet size is 4'2" it occupies less space than the VGP-4000Q.

The newest ROS V.5 Plus sound source is installed to implement piano sounds that is daringly close to the original, and it is supplemented with the authentic New RHA-3W keyboard.

High quality woofer and twitter speakers brings the sensation of a concert hall in its clear and broad sound. Among its features are an automatic accompaniment system with 80 different rhythmic styles in different genres, including the ability to generate chordal accompaniment in the chosen style.



### Deluxe Grand Piano Style

Polished Ebony Finish

   New RHA-3W  
ROS V.5 Plus 

- 88 Real Hammer Action wooden keyboards with 3 sensors (New RHA-3W)
- 256 Polyphony Notes
- ROS V.5 Plus
- EXV 10 + GM128 Voices
- 80 Auto-Accompaniment Rhythm Styles
- 128 X 64 LCD Display • Record : 2 Track 3 Song
- 16 Registrations (4 bank x 4) • HD Reverb, HD Effect
- Layer • Split • Twin Piano • 4-Band Graphic Equalizer
- Master Tune • Key Transpose
- 3 Pedals (Soft/ Sostenuto/ Damper) with half-damper
- Power Output : 50W+50W (2-Way 6 Speakers)
- MP3 Music Player • Smart Bay

## SGP-600

The SGP-600 adds on modernistic appeal by processing its nickel plated cabinet the same way acoustic pianos do theirs. While maintaining the beauty of grand piano looks, its compact and slim cabinet design allows it to be used in family settings where space is limited. The majestic sound of 2 channel 6 speakers booming out of its refined compact body is yet another appeal of the SGP-600.

Dynatone's newest sound source, the ROS V.5 Plus is implemented to produce finest quality sounds, and the wooden hammer action keyboard New RHA-3W emulates the touch of acoustic grand pianos.



### Semi Grand Piano Style

Polished Ebony Finish

 New RHA-3W ROS V.5 Plus

- 88 Real Hammer Action wooden keyboards with 3 sensors (New RHA-3W)
- 256 Polyphony Notes
- ROS V.5 Plus
- EXV 10 + 23
- Record : 1 Track 1 Song
- HD Reverb
- Layer • Split • Twin Piano
- Master Tune • Key Transpose
- 3 Pedals (Soft/ Sostenuto/ Damper) with half-damper
- Power Output : 50W+50W (2-Way 4 Speakers)

## SDP-600

The SDP-600 employs a soundboard to support its speaker system so that it sounds most optimized when played. Black polished cabinet with mahogany accent make up a elegant design. For those who want a grand piano but without the required space to host one such monster, the SDP-600 would be a valuable choice. All specifications and features are identical with the SGP-600 besides the cabinet design.

### Deluxe Piano Style

Polished Ebony Finish

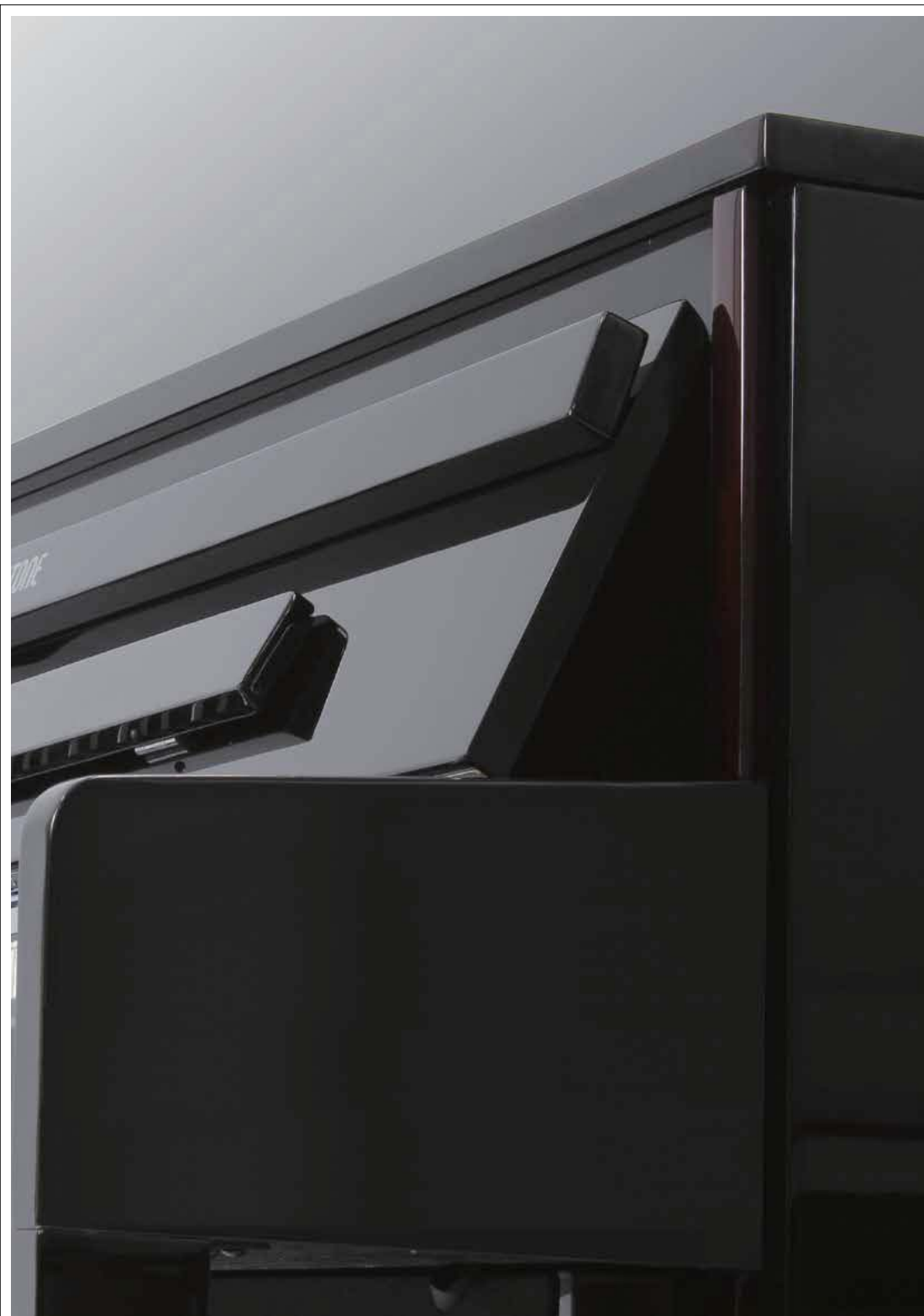
 New RHA-3W ROS V.5 Plus

- 88 Real Hammer Action wooden keyboards with 3 sensors (New RHA-3W)
- 256 Polyphony Notes
- ROS V.5 Plus
- EXV 10 + 23
- Record : 1 Track 1 Song
- HD Reverb
- Layer • Split • Twin Piano
- Master Tune • Key Transpose
- 3 Pedals (Soft/ Sostenuto/ Damper) with half-damper
- Power Output : 50W+50W (2-Way 4 Speakers)



## Regular piano

The upright pianos of Dynatone are designed to satisfy pianists of any skill level ranging from complete novice to demanding professionals. Using the expertise accumulated by manufacturing only digital pianos for decades, Dynatone sought to further improve the basic standard in its upright pianos and conveys realistic touch response and sound. Also notable are the classical appeal of designs and thoughtful control panel layout to improve user convenience.





## DPR-3500

The DPR-3500 is the upright variant of the GPR-3500, which occupies considerably less space while retaining the full functionality of top-tier grand pianos. It implements deep and inspiring sound system close to the sound of quality pianos, and is equipped with the New RHA-3W keyboard for its haptic simulation of the acoustic grand. Its extensive auto accompaniment system features 80 different rhythmic styles in many musical genres and produces chords accordingly as well. Connecting to external devices are comfortably easy now that the connection terminals are gathered on the front of the panel.

GRAPHIC LCD USB MEMORY New RHA-3W  
ROS V.5 Plus Smart Bay

- 88 Real Hammer Action wooden keyboards with 3 sensors (New RHA-3W)
- 256 Polyphony Notes
- ROS V.5 Plus
- EXV 10 + GM128 Voices
- 80 Auto-Accompaniment Rhythm Styles
- 128 X 64 LCD Display • Record : 2 Track 3 Song
- 16 Registrations (4 bank x 4) • HD Reverb, HD Effect
- Layer • Split • Twin Piano • 4-Band Graphic Equalizer
- Master Tune • Key Transpose
- 3 Pedals (Soft/ Sostenuto/ Damper) with half-damper
- Power Output : 50W+50W (2-Way 6 Speakers)
- MP3 Music Player • Smart Bay



## DPR-3100

The DPR-3100 produces an advanced new sound that enables a dynamic performance. The combination of its New RHA-3 keyboard and its new sound enables detailed expression. Its new Damper and String Resonance provide a rich sound that is similar to that of an acoustic piano.

USB MEMORY New RHA-3  
ROS V.5 Smart Bay

- 88 Hammer Action keyboard with 3 sensors (New RHA-3)
- 256 Polyphony Notes
- ROS V.5
- EXV 10 + GM128 Voices
- 80 Auto-Accompaniment Rhythm Styles
- Multi Function LED Display
- Record : 2 Track 3 Song
- 5 Registrations
- HD Reverb, HD Effect • Layer
- Split • Twin Piano
- Master Tune
- Key Transpose
- 3 Pedals (Soft/ Sostenuto/ Damper) with half-damper
- Power Output : 20W+20W (2-Way 4 Speakers)
- MP3 Music Player
- Smart Bay



## DPR-3200H

The DPR-3200H is loaded with the newest ROS V.5 Plus sound source to offer its overwhelmingly realistic sound. High quality woofer and tweeter speakers are installed within its sound-optimized cabinet to output powerful sounds. The authentic touch of Dynatone's ARHA-3I keyboard is able to satisfy even professionals. To facilitate easier use, the user interface includes a graphic LCD window and intuitive panel layout.

GRAPHIC LCD USB MEMORY ARHA-3I  
ROS V.5 Plus Smart Bay

- 88 Advanced Real Hammer Action keyboard with 3 sensors & Ivory top (ARHA-3I)
- 256 Polyphony Notes
- ROS V.5 Plus
- EXV 10 + GM128 Voices
- 80 Auto-Accompaniment Rhythm Styles
- 128 X 64 LCD Display • Record : 2 Track 3 Song
- 16 Registrations (4 bank x 4) • HD Reverb, HD Effect
- Layer • Split • Twin Piano • 4-Band Graphic Equalizer
- Master Tune • Key Transpose
- 3 Pedals (Soft/ Sostenuto/ Damper) with half-damper
- Power Output : 50W+50W (2-Way 4 Speakers)
- MP3 Music Player • Smart Bay



## DPR-1650

The DPR-1650 is the piano for those customers who wish to keep the cost reasonable while gaining access to the diverse utilities of a digital piano. The LED ensures easy manipulation of the unit. 40 types of auto-accompaniment in many genres are included which makes it so easy to play chords.

- 88-Hammer Action Keyboard NHA
- 64 Polyphony Notes
- DNS
- GM 128 Voices
- 40 Auto-Accompaniment Rhythm Styles
- Multi Function LED Display
- Record : 2 Track 1 Song
- Reverb • Layer • Split • Twin Piano
- Master Tune • Key Transpose
- 3 Pedals (Soft, Sostenuto, Sustain)
- Power Output : 15W+15W (2-Way 4 Speakers)



## DPS-90H

Due to its internal ROS V.5 sound source, the DPS-90H exhibits the characteristic non-pitch sounds of acoustic pianos including the string resonance, damper resonance, damper samples and key-off samples which enhances realism in its piano sounds.

The powerful sound system of 2-channel 4 speakers improves the pleasure of playing. The ARHA-3I keyboard, the product of Dynatone's expertise in the field, provides the authentic touch of which even professional players are comfortable with.

USB ARHA-3I ROS V.5

- 88 Advanced Real Hammer Action keyboard with 3 sensors & Ivory top (ARHA-3I)
- 256 Polyphony Notes
- ROS V.5
- EXV 10 + GM128 Voices
- Multi Function LED Display
- Record : 3 Track 3 Song · 5 Registrations
- Reverb, Effect · Layer · Split · Twin Piano
- Master Tune · Key Transpose
- 3 Pedals (Soft/ Sostenuto/ Damper) with half-damper
- Power Output : 30W+30W (2-Way 4 Speakers)



## DPS-70

The DPS-70 has a built-in sound source of ROS V.4 Plus to reproduce resonance sound characteristic of an acoustic piano, thus enabling a player to experience realistic sound. Its 256 note polyphony makes deep and rich sound, and the product is equipped with the New RHA keyboard, realizing a touch feeling of an acoustic piano.

USB New RHA ROS V.4Plus

- 88 Real Hammer Action keyboard (New RHA)
- 256 Polyphony Notes
- ROS V.4 Plus
- GM128 Voices, 3Drum Sets, 2 Effect Sets
- Multi Function LED Display
- Record : 3 Tracks 3 Songs
- 5 Registrations
- Digital Effects : 8 Reverbs, 8 Effects
- Layer · Split · Twin Piano
- Master Tune · Key Transpose
- 3 Pedals (Soft/ Sostenuto/ Damper)
- Power Output : 20W+20W (2-Way 4 Speakers)



## DPS-80H

The authentic touch of artificial ivory top keys and abundant sound are what characterizes the DPS-80H.

Newly improved cabinet and panel design adds on its appeal. It perfectly serves not only educational purposes, but also as an efficient practice instrument for accomplished pianists.

USB ARHA-I ROS V.5

- 88 Advanced Real Hammer Action keyboard with Ivory top (ARHA-I)
- 256 Polyphony Notes
- ROS V.5
- EXV 10 + GM128 Voices
- Multi Function LED Display
- Record : 3 Track 3 Song · 5 Registrations
- Reverb, Effect · Layer · Split · Twin Piano
- Master Tune · Key Transpose
- 3 Pedals (Soft/ Sostenuto/ Damper) with half-damper
- Power Output : 20W+20W (2-Way 4 Speakers)



## DPS-60

The DPS-60 features a natural sound made with Dynatone's stereo sampling of the ROS V.3 Plus sound source. Its cabinet with a simple, slim design occupies less space, and its GM 128 voices enhance utilization. In addition, a control panel on the front panel adds its convenience.

USB New RHA ROS V.3Plus

- 88 Real Hammer Action keyboard (New RHA)
- 81 Polyphony Notes
- ROS V.3 Plus
- GM128 Voices, 2Drum Sets, 2 Effect Sets
- Multi Function LED Display
- Record : 2 Tracks 1 song
- Digital Effects : Reverb, Effect
- Layer · Split · Twin Piano
- Master Tune · Key Transpose
- 3 Pedals (Soft/ Sostenuto/ Damper)
- Power Output : 12W+12W (1-Way 2 Speakers)



## SLP-250H

*The compact SLP-250H carries a surprisingly powerful sound system while keeping its size minimal, which makes it the perfect piano for home. 23 selected voices are included, and string and damper resonance is implemented to bring the sound closer to the original. Ivory-topped ARHA-I keyboard allows more precise expression of forte and piano.*

USB ARHA-I ROS V.4 Plus

- 88 Advanced Real Hammer Action keyboard with Ivory top (ARHA-I)
- 256 Polyphony Notes
- ROS V.4 Plus
- EXV 10 + 23
- Record : 1 Track 1 Song
- Reverb · Layer · Split · Twin Piano
- Master Tune · Key Transpose
- 3 Pedals (Soft/ Sostenuto/ Damper) with half-damper
- Power Output : 15W+15W (2-Way 4 Speakers)



## SLP-150

*The natural sound of the SLP-150 is the outcome of Dynatone's DNS (Dynamic Natural Sound) stereo sampling technology. Simple and slim in design, it takes up little space and goes well with any kind of home interior. 14 types of high-quality instrumental voices are included, as well as versatile utilities such as recording, layer and split.*

- 88-Hammer Action Keyboard NHA
- 64 Polyphony Notes
- DNS
- Stereo 14 Instruments + 1 Drum + 1 SFX
- Multi Function LED Display
- Record : 2 Track 1 Song
- Reverb · Layer · Split · Twin Piano
- Master Tune · Key Transpose
- 3 Pedals (Soft, Sostenuto, Sustain)
- Power Output : 15W+15W (1-Way 2 Speakers)



## SLP-210

*The SLP-210, adopted with a slim type cabinet, is a musical instrument product suitable for practice at home because it produces a rich sound despite its small cabinet. It has 18 carefully selected voices, and its LED display on its left control panel enables easy operation.*

USB New RHA ROS V.3 Plus

- 88 Real Hammer Action keyboard (New RHA)
- 81 Polyphony Notes
- ROS V.3 Plus
- 18 Voices, 1 Drum Set, 1 Effect Set (When connected to MIDI, GM128)
- Multi Function LED Display
- Record : 2 Tracks 1 song
- Digital Effects : Reverb, Effect
- Layer · Split · Twin Piano
- Master Tune · Key Transpose
- 3 Pedals (Soft/ Sostenuto/ Damper)
- Power Output : 12W+12W (1-Way 2 Speakers)



## SLP-50

*Dynatone's budget offering, the SLP-50 comes with weighted key touch and has great expressive capability considering its price. 14 high-quality voices recreates the sound of instruments just as realistic. Its simple and refined design includes the LED on the middle of the panel for ease of use.*

- 88-Hammer Action Keyboard NHA
- 32 Polyphony Notes
- DNS
- Stereo 14 Instruments + 1 Drum + 1 SFX
- Multi Function LED Display
- Record : 2 Track 1 Song
- Reverb · Layer · Split · Twin Piano
- Master Tune · Key Transpose
- 3 Pedals (Soft, Sostenuto, Sustain)
- Power Output : 15W+15W (1-Way 2 Speakers)



# Portable piano

Dynatone's stage pianos are set to draw attentions anywhere with its elegant and modern look.

Advantages like efficient space consumption, appealing outlook, diverse utility and delicate sound and key touch are but only a part of what makes Dynatone stage pianos the favorite of many.

Meet the stage pianos of Dynatone pianos which combines attractive look and calm, well constructed software inside it.





# DPP-710

The DPP-710 delivers various specifications in a compact body. Having a lot in common with high-end models, the DPP-710 offers 256-polyphony, Ivory-topped ARHA-I keyboard and hundreds of additional sounds and rhythms. Its attractive & stylish design with black finish will appropriately match most home interiors and the compact size cabinet will allow it to fit into many places.



USB ARHA-I ROS V.4

- 88 Advanced Real Hammer Action keyboard with Ivory top (ARHA-I) • 256 Polyphony Notes • ROS V.4 • EXV 10 + GM128 Voices
- Multi Function LED Display • Record : 2 Track 1 Song • 5 Registrations • Reverb, Effect • Layer • Split • Master Tune • Key Transpose
- 1 Pedal • Power Output : 15W+15W (1-Way 6 Speakers)



## Pedal

Traditional damper pedal role when connected to the DAMPER input.  
7 different pedal functions to choose from when connected to the ASSIGNABLE input.



## Rhythm/Auto-Accompaniment

80 types of rhythm available.  
Converts simple chord indications into a full accompaniment consisting of drums, bass and chords.



## Layer

Mixes up two different voices to be played together.



## Split

Assigns different voices individually to each of the hands.



## Touch Sensitivity

10 different touch sensitivity options that define how responsive the volume is to the keystroke velocity.



## Record

Two tracks with each recording up to 6,500 notes, an amount that may record Für Elise five times in a row.



## Registration

Stores the configuration of piano's parameters (rhythm, voice, utilities etc.) to be recalled later for convenient use.



## DEMO

Demonstrational recordings of 50 pieces in different musical genres.



## USB MIDI

Easy connection with PCs without requiring external components.  
MIDI IN/OUT provided to interoperate with computers. Access to score writing and composition/arrangement projects.



## Multipurpose LED

Easy-to-see lights to display functions and messages.

# DPP-510

The DPP-510, a portable piano with a clean and modern design, features natural sound like a real piano produced through stereo sampling of Dynamic Natural Sound (DNS). In addition, it has a keyboard with the same size and weight as those of the acoustic piano, and a variety of its built-in functions enhance utilization.



- 88-Hammer Action Keyboard NHA • 128 Polyphony Notes • 14 PCM voices, +1 Drum +1 SFX • LCD Display with blue backlight
- Record : 2 Tracks 1 song • Digital Effects : Reverb, Effect • Layer • Split • Twin Piano • Master Tune • Key Transpose
- Power Output : 15W + 15W (1-Way 2 Speakers)



SPECIFICATIONS

		High Polished Piano							
		VGP-4000Q	GPR-3500	SGP-600	SDP-600	DPR-3500	DPR-3200H	DPR-3100	DPS-90H
Keyboard		New RHA-3W Wooden Key Triple-Sensor Player System	New RHA-3W Wooden Key Triple-Sensor	New RHA-3W Wooden Key Triple-Sensor	New RHA-3W Wooden Key Triple-Sensor	New RHA-3W Wooden Key Triple-Sensor	ARHA-3I Ivory Top Triple-Sensor	New RHA-3 Triple-Sensor	ARHA-3I Ivory Top Triple-Sensor
Polyphony Note		Max. 256	Max. 256	Max. 256	Max. 256	Max. 256	Max. 256	Max. 256	Max. 256
Sound	Preset Sound	EXV 10 + GM 128	EXV 10 + GM 128	EXV 10 + 23	EXV 10 + 23	EXV 10+ GM 128	EXV 10+ GM 128	EXV 10+ GM 128	EXV 10 + GM 128
	Source	ROS V.5 Plus	ROS V.5 Plus	ROS V.5 Plus	ROS V.5 Plus	ROS V.5 Plus	ROS V.5 Plus	ROS V.5	ROS V.5
	Multi Layered Full Scale Sound	2 Pianos	2 Pianos	2 Pianos	2 Pianos	2 Pianos	2 Pianos	1 Pianos	1 Pianos
	Multi Layered Sound	3 Pianos	3 Pianos	3 Pianos	3 Pianos	3 Pianos	3 Pianos	3 Pianos	3 Pianos
	Total Bank Memory Size	8G bit	8G bit	8G bit	8G bit	8G bit	8G bit	4G bit	4G bit
Rhythm		80	80	-	-	80	80	80	-
Display		128 x 64 Graphic LCD	128 x 64 Graphic LCD	-	-	128 x 64 Graphic LCD	128 x 64 Graphic LCD	3 Digit LED	3 Digit LED
Piano Effect	Full Scale String Resonance Sound	Yes (Adjustable)	Yes (Adjustable)	Yes (Fixed)	Yes (Fixed)	Yes (Adjustable)	Yes (Adjustable)	Yes (Adjustable)	Yes (Adjustable)
	Damper Resonance Digital Effect	Yes (Adjustable)	Yes (Adjustable)	Yes (Fixed)	Yes (Fixed)	Yes (Adjustable)	Yes (Adjustable)	Yes (Adjustable)	Yes (Adjustable)
	Damper Resonance Sound	Yes (Adjustable)	Yes (Adjustable)	-	-	Yes (Adjustable)	Yes (Adjustable)	Yes (Adjustable)	Yes (Adjustable)
	Full Scale Key-off Sound	Yes (Adjustable)	Yes (Adjustable)	-	-	Yes (Adjustable)	Yes (Adjustable)	Yes (Adjustable)	Yes (Adjustable)
	Full Scale Mechanical Noise Sound	Yes (Adjustable)	Yes (Adjustable)	-	-	Yes (Adjustable)	Yes (Adjustable)	Yes (Adjustable)	-
	Stretch Tune	Yes	Yes	-	-	Yes	Yes	Yes	Yes
	Classical Music	50 Music (Internal) / over 1,000 Music (USB)	50 Music (Internal) / over 1,000 Music (USB)	50 Music (Internal)	50 Music (Internal)	50 Music (Internal) / over 1,000 Music (USB)	50 Music (Internal) / over 1,000 Music (USB)	50 Music (Internal) / over 1,000 Music (USB)	50 Music (Internal)
Music	Educational Music	Beyer 106 Czerny 100-30-40 Burgmuller 25 Sonatine - with Left & Right hand practice function	Beyer 106 Czerny 100-30-40 Burgmuller 25 Sonatine - with Left & Right hand practice function	Beyer 106 Czerny 100-30-40 Burgmuller 25 Sonatine - with Left & Right hand practice function	Beyer 106 Czerny 100-30-40 Burgmuller 25 Sonatine - with Left & Right hand practice function	Beyer 106 Czerny 100-30-40 Burgmuller 25 Sonatine - with Left & Right hand practice function	Beyer 106 Czerny 100-30-40 Burgmuller 25 Sonatine - with Left & Right hand practice function	Beyer 106 Czerny 100-30-40 Burgmuller 25 Sonatine - with Left & Right hand practice function	Beyer 106 Czerny 100-30-40 Burgmuller 25 Sonatine - with Left & Right hand practice function
	Music Key Transpose	Yes	Yes	-	-	Yes	Yes	Yes	Yes
USB Music Player	MP3	Yes	Yes	-	-	Yes	Yes	Yes	-
	SMF (Standard MIDI File)	Format 0/1 with Lyric display	Format 0/1 with Lyric display	-	-	Format 0/1 with Lyric display	Format 0/1 with Lyric display	Format 0/1 with Lyric display	-
	AMD (Advanced MIDI File)	Yes	Yes	-	-	Yes	Yes	Yes	-
DSP	Reverb	HD Reverb	HD Reverb	HD Reverb	HD Reverb	HD Reverb	HD Reverb	HD Reverb	Reverb
	Effect	HD Effect	HD Effect	-	-	HD Effect	HD Effect	HD Effect	Effect
	EQ/3D	8 Preset with 4 Band Graphic EQ	8 Preset with 4 Band Graphic EQ	-	-	8 Preset with 4 Band Graphic EQ	8 Preset with 4 Band Graphic EQ	-	-
Pedal		3 (Soft/Sostenuto/ Damper) Support Half Damper Pedal	3 (Soft/Sostenuto/ Damper) Support Half Damper Pedal	3 (Soft/Sostenuto/ Damper) Support Half Damper Pedal	3 (Soft/Sostenuto/ Damper) Support Half Damper Pedal	3 (Soft/Sostenuto/ Damper) Support Half Damper Pedal	3 (Soft/Sostenuto/ Damper) Support Half Damper Pedal	3 (Soft/Sostenuto/ Damper) Support Half Damper Pedal	3 (Soft/Sostenuto/ Damper) Support Half Damper Pedal
USB con- nection	MIDI Interface	Yes	Yes	Yes	Yes	Yes	Yes	Yes	Yes
	Audio Interface	Yes (48KHz 24bit)	Yes (48KHz 24bit)	Yes (48KHz 24bit)	Yes (48KHz 24bit)	Yes (48KHz 24bit)	Yes (48KHz 24bit)	Yes (48KHz 24bit)	Yes (48KHz 24bit)
	Compatibility	USB 2.0 PC/ Mac/ iOS/ Android	USB 2.0 PC/ Mac/ iOS/ Android	USB 2.0 PC/ Mac/ iOS/ Android	USB 2.0 PC/ Mac/ iOS/ Android	USB 2.0 PC/ Mac/ iOS/ Android	USB 2.0 PC/ Mac/ iOS/ Android	USB 2.0 PC/ Mac/ iOS/ Android	USB 2.0 PC/ Mac/ iOS/ Android
External Memory		USB Memory Stick	USB Memory Stick	-	-	USB Memory Stick	USB Memory Stick	USB Memory Stick	-
Record		2 Track X 3 Song	2 Track X 3 Song	1 Track X 1 Song	1 Track X 1 Song	2 Track X 3 Song	2 Track X 3 Song	2 Track X 3 Song	3 Track X 3 Song
Function	Layer	Yes (Adjustable Vol.)	Yes (Adjustable Vol.)	Yes (Adjustable Vol.)	Yes (Adjustable Vol.)	Yes (Adjustable Vol.)	Yes (Adjustable Vol.)	Yes (Adjustable Vol.)	Yes (Adjustable Vol.)
	Split	Yes (Adjustable Vol.)	Yes (Adjustable Vol.)	Yes (Adjustable Vol.)	Yes (Adjustable Vol.)	Yes (Adjustable Vol.)	Yes (Adjustable Vol.)	Yes (Adjustable Vol.)	Yes (Adjustable Vol.)
	Twin Piano	Yes	Yes	Yes	Yes	Yes	Yes	Yes	Yes
	Master Tune	Yes	Yes	Yes	Yes	Yes	Yes	Yes	Yes
	Master Key- Transpose	Yes	Yes	Yes	Yes	Yes	Yes	Yes	Yes
	Touch	Yes	Yes	Yes	Yes	Yes	Yes	Yes	Yes
	Metronome	Yes	Yes	Yes	Yes	Yes	Yes	Yes	Yes
	Brilliance	Yes	Yes	-	-	Yes	Yes	Yes	Yes
	Registration	16 (4 Bank x 4)	16 (4 Bank x 4)	-	-	16 (4 Bank x 4)	16 (4 Bank x 4)	5	5
	Octave	Yes	Yes	-	-	Yes	Yes	Yes	Yes
	Scale Tune	9 Scales	9 Scales	-	-	9 Scales	9 Scales	9 Scales	9 Scales
	Mic Effect	HD Effect	HD Effect	-	-	HD Effect	-	-	-
	Smart Bay	Yes	Yes	-	-	Yes	Yes	Yes	-
Terminal	D Box	-	-	Yes	Yes	-	-	-	Yes
	USB to Host	USB MINI Type B	USB MINI Type B	USB Type B	USB Type B	USB MINI Type B	USB MINI Type B	USB MINI Type B	USB Type B
	USB to Device	USB Type A	USB Type A	-	-	USB Type A	USB Type A	USB Type A	-
	Stereo Audio Out	3.5mm Stereo / RCA	3.5mm Stereo / RCA	RCA	RCA	3.5mm Stereo / RCA	3.5mm Stereo / RCA	3.5mm Stereo / RCA	3.5mm Stereo
	Stereo Audio In (MP3 In)	3.5mm Stereo	3.5mm Stereo	RCA	RCA	3.5mm Stereo	3.5mm Stereo	3.5mm Stereo	3.5mm Stereo
	MIDI	In/Out	In/Out	In/Out	In/Out	In/Out	In/Out	-	-
	Mic In	In	In	-	-	In	-	-	-
	Pedal In	In	In	In	In	In	In	In	In
Output		50W + 50W (2-Way 6 Speakers)	50W + 50W (2-Way 6 Speakers)	50W + 50W (2-Way 4 Speakers)	50W + 50W (2-Way 4 Speakers)	50W + 50W (2-Way 4 Speakers)	50W + 50W (2-Way 4 Speakers)	20W + 20W (2-Way 4 Speakers)	30W + 30W (2-Way 4 Speakers)
Dimension (W x L x H)		1515 x 1420 x 1010 mm	1415 x 1165 x 905 mm	1400 x 905 x 795 mm	1405 x 420 x 1000 mm	1395 x 490 x 900 mm	1395 x 490 x 900 mm	1395 x 470 x 865 mm	1395 x 470 x 865 mm

Regular Piano										Portable Piano	
DPS-80H	DPS-70	DPS-60	SLP-250H	SLP-210	DPR-1650	SLP-150	SLP-50	DPP-710	DPP-510		
ARHA-1 Ivory Top	New RHA	New RHA	ARHA-1 Ivory Top	New RHA	NHA	NHA	NHA	ARHA-1 Ivory Top	NHA		
Max. 256	Max. 256	Max. 81	Max. 256	Max. 81	Max. 64	Max. 64	Max. 32	Max. 256	Max. 128		
EXV 10 + GM 128	GM 128 + 3 Drum Sets + 2 SFX	GM 128 + 3 Drum Sets + 2 SFX	EXV 10 + 23	18 Voices (When connected to MIDI, GM 128 + 1 Drum Set + 1 SFX)	GM 128	Stereo 14 Instruments + 1 Drum + 1 SFX	Stereo 14 Instruments + 1 Drum + 1 SFX	GM 128	14 voices + 1 SFX		
ROS V.5	ROS V.4 Plus	ROS V.3 Plus	ROS V.4 Plus	ROS V.3 Plus	DNS	DNS	DNS	ROS V.4	DNS		
1 Pianos	-	-	-	-	-	-	-	-	-		
3 Pianos	3 Pianos	1 Piano	3 Pianos	1 Piano	1 Piano	1 Piano	1 Piano	1 Piano	1 Piano		
4G bit	1G bit	256M bit	1G bit	256M bit	128M bit	128M bit	128M bit	512M bit	128 Mbit		
-	-	-	-	-	40	-	-	80	-		
3 Digit LED	3 Digit LED	3 Digit LED	-	3 Digit LED	3 Digit LED	3 Digit LED	3 Digit LED	3 Digit LED	LCD with backlight		
Yes (Adjustable)	Yes (Adjustable)	-	Yes (Fixed)	-	-	-	-	Yes	-		
Yes (Adjustable)	Yes (Adjustable)	-	Yes (Fixed)	-	-	-	-	Yes	-		
Yes (Adjustable)	Yes (Adjustable)	-	-	-	-	-	-	-	-		
Yes (Adjustable)	Yes (Adjustable)	-	-	-	-	-	-	-	-		
Yes (Adjustable)	Yes (Adjustable)	-	-	-	-	-	-	-	-		
-	-	-	-	-	-	-	-	-	-		
Yes	Yes	-	-	-	-	-	-	-	-		
50 Music (Internal)	50 Music (Internal)	50 Music (Internal)	50 Music (Internal)	50 Music (Internal)	50 Music (Internal)	50 Music (Internal)	50 Music (Internal)	50 Music (Internal)	50 Music (Internal)		
Beyer 106 Czerny 100-30-40 Burgmuller 25 Sonatine - with Left & Right hand practice function	Beyer 106 Czerny 100-30-40 Burgmuller 25 Sonatine - with Left & Right hand practice function	Beyer 106 Czerny 100-30-40 Burgmuller 25 Sonatine - with Left & Right hand practice function	Beyer 106 Czerny 100-30-40 Burgmuller 25 Sonatine - with Left & Right hand practice function	Beyer 106 Czerny 100-30-40 Burgmuller 25 Sonatine - with Left & Right hand practice function	Beyer 106 Czerny 100-30-40 Burgmuller 25 Sonatine - with Left & Right hand practice function	Beyer 106 Czerny 100-30-40 Burgmuller 25 Sonatine - with Left & Right hand practice function	Beyer 106 Czerny 100-30-40 Burgmuller 25 Sonatine - with Left & Right hand practice function	Beyer 106 Czerny 100-30-40 Burgmuller 25 Sonatine - with Left & Right hand practice function	Beyer 106 Czerny 100-30-40 Burgmuller 25 Sonatine - with Left & Right hand practice function		
Yes	Yes	No	No	-	-	-	-	-	No		
-	-	-	-	-	-	-	-	-	-		
-	-	-	-	-	-	-	-	-	-		
-	-	-	-	-	-	-	-	-	-		
Reverb	Reverb	Reverb	Reverb	Reverb	Reverb	Reverb	Reverb	Reverb	Reverb		
Effect	Effect	Effect	-	Effect	-	-	-	Effect	Effect		
-	-	-	-	-	-	-	-	-	-		
3 (Soft/Sostenuto/ Damper) Support Half Damper Pedal	3 (Soft/Sostenuto/ Damper)	3 (Soft/Sostenuto/ Damper)	3 (Soft/Sostenuto/ Damper) Support Half Damper Pedal	3 (Soft/Sostenuto/ Damper)	3 (Soft/Sostenuto/ Damper)	3 (Soft/Sostenuto/ Damper)	3 (Soft/Sostenuto/ Damper)	1 Pedal	Sustain		
Yes	Yes	Yes	Yes	Yes	Yes	Yes	Yes	Yes	Yes		
Yes (48KHz 24bit)	Yes (48KHz 24bit)	Yes (48KHz 24bit)	Yes (48KHz 24bit)	Yes (48KHz 24bit)	Yes (48KHz 16bit)	Yes (48KHz 16bit)	Yes (48KHz 16bit)	Yes (48KHz 24bit)	Yes (48KHz 16bit)		
USB 2.0 PC/ Mac/ iOS/ Android	USB 2.0 PC/ Mac/ iOS/ Android	USB 2.0 PC/ Mac/ iOS/ Android	USB 2.0 PC/ Mac/ iOS/ Android	USB 2.0 PC/ Mac/ iOS/ Android	USB 1.0 PC/ Mac/ iOS/ Android	USB 1.0 PC/ Mac/ iOS/ Android	USB 1.0 PC/ Mac/ iOS/ Android	USB 2.0 PC/ Mac/ iOS/ Android	USB 1.0 PC/ Mac/ iOS/ Android		
-	-	-	-	-	-	-	-	-	-		
3 Track X 3 Song	3 Track X 3 Song	2 Track X 1 Song	1 Track X 1 Song	2 Track X 1 Song	2 Track X 1 Song	2 Track X 1 Song	2 Track X 1 Song	2 Track X 1 Song	2 Track X 1 Song		
Yes (Adjustable Vol.)	Yes (Adjustable Vol.)	Yes	Yes (Adjustable Vol.)	Yes	Yes	Yes	Yes	Yes (Adjustable Vol.)	Yes		
Yes (Adjustable Vol.)	Yes (Adjustable Vol.)	Yes	Yes (Adjustable Vol.)	Yes	Yes	Yes	Yes	Yes (Adjustable Vol.)	Yes		
Yes	Yes	Yes	Yes	Yes	Yes	Yes	Yes	-	Yes		
Yes	Yes	Yes	Yes	Yes	Yes	Yes	Yes	Yes	Yes		
Yes	Yes	Yes	Yes	Yes	Yes	Yes	Yes	Yes	Yes		
Yes	Yes	Yes	Yes	Yes	Yes	Yes	Yes	Yes	Yes		
Yes	Yes	-	-	-	-	-	-	Yes	-		
5	5	-	-	-	-	-	-	5	-		
Yes	Yes	-	-	-	Yes	-	-	Yes	-		
9 Scales	9 Scales	-	-	-	-	-	-	-	-		
-	-	-	-	-	-	-	-	-	-		
-	-	-	-	-	-	-	-	-	-		
Yes	Yes	-	-	-	-	-	-	-	-		
USB Type B	USB Type B	USB Type B	USB Type B	USB Type B	USB Type B	USB Type B	USB Type B	USB Type B	USB Type B		
-	-	-	-	-	-	-	-	-	-		
3.5mm Stereo	3.5mm Stereo	3.5mm Stereo	3.5mm Stereo	3.5mm Stereo	6.35mm Stereo	6.35mm Stereo	6.35mm Stereo	6.35mm Stereo	Stereo RCA		
3.5mm Stereo	3.5mm Stereo	3.5mm Stereo	3.5mm Stereo	3.5mm Stereo	6.35mm Stereo	6.35mm Stereo	6.35mm Stereo	-	-		
-	-	-	-	-	-	-	-	-	Out		
-	-	-	-	-	-	-	-	-	-		
In	In	In	In	In	In	In	In	2 in (Damper, Assignable)	In		
20W + 20W (2-Way 4 Speakers)	20W + 20W (2-Way 4 Speakers)	12W + 12W (1-Way 2 Speakers)	15W + 15W (2-Way 4 Speakers)	12W + 12W (1-Way 2 Speakers)	15W + 15W (2-Way 4 Speakers)	15W + 15W (2-Way 4 Speakers)	15W + 15W (2-Way 4 Speakers)	15W + 15W (1-Way 2 Speakers)	15W + 15W (1-Way 2 Speakers)		
1395 x 470 x 865 mm	1395 x 470 x 865 mm	1358 x 445 x 842 mm	1380 x 415 x 835 mm	1358 x 445 x 842 mm	1410 x 510 x 870 mm	1370 x 440 x 840 mm	1370 x 440 x 840 mm	1340 x 350 x 140 mm	1315 x 337 x 130 mm		